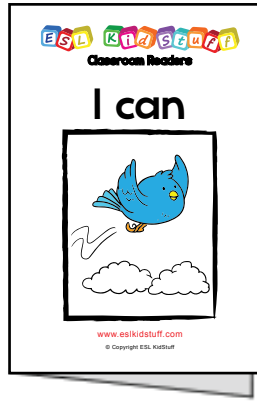


How to Assemble a Regular-sized (A4 folded in half) Doubled-sided Classroom Reader



Step 1:

Print out the pages of the reader. Print the cover on one side keeping the reverse side blank. Print the inner sheets of the reader on both sides.



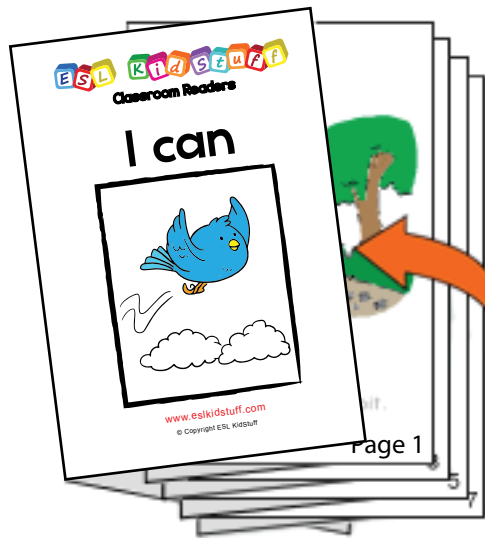
Step 2:

Take the cover page and fold it exactly in half.



Step 3:

Fold each of the inner pages in half and place inside each other.



Step 4:

Slide the inner pages inside the cover.



Step 5:

Staple along the spine. Three staples is usually enough.



Step 6:

Finally, use some masking tape along the spine of the reader.

Your reader is now ready!